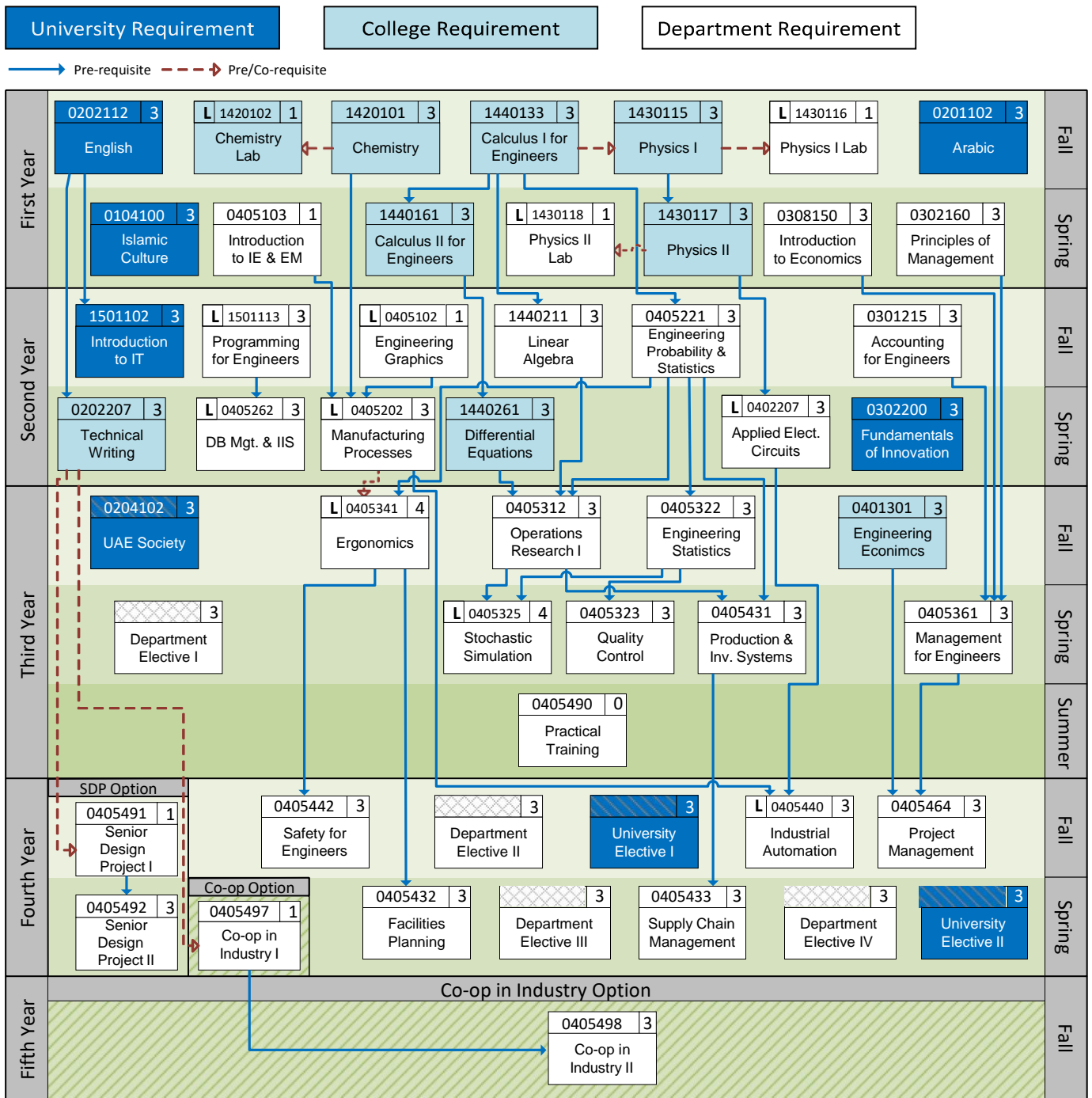


Study Plan of the B.Sc. Program in Industrial Engineering and Engineering Management for Students Joining from Fall 2021/2022



Department Electives (two courses from each group)

Group A (Industrial Engineering Electives)	
0405438	Lean Production Systems
0405434	Maintenance Planning and Control
0405425	Quality Engineering
0405414	Operations Research II
0408480	Reliability Engineering
0405441	Human Factors and Ergonomics
0405482	Special Topics in Industrial Engineering
Group B (Engineering Management Electives)	
0405462	Innovation Management
0302170	Principles of Marketing
0302360	Human Resources Management
0302260	Organizational Behavior
0302467	Strategic Management
0405485	Special Topics in Engineering Management

University Electives (one course from each domain)

Domain 1	Domain 2
0203100 Islamic Civilization	1430101 Astro & Space Sciences
0602246 Human Rights in Islam and International Declarations	0401142 Man and the Environment
0201140 Introduction to Arabic Literature	0507101 Health Awareness and Nutrition
0203200 History of Sciences among Muslims	0505101 Fitness and Wellness
0203102 History of Arabian Gulf	1450100 Biology and Society
0900107 History of Medical & Health Sciences	
0710109 Arts & Medicine	
0202130 French Language	
0206102 Fundamentals of Islamic Education	
0206103 Introduction to Psychology	
0308150 Introduction to Economics	
0302150 Intro to Business Administration	
0800107 Media in Modern Society	
0308131 Personal Finance	
0104130 Analytical Biography of the Prophet	
0103103 Islamic System	

Credit Hours:

Course Number:

Course with lab:

Course name: